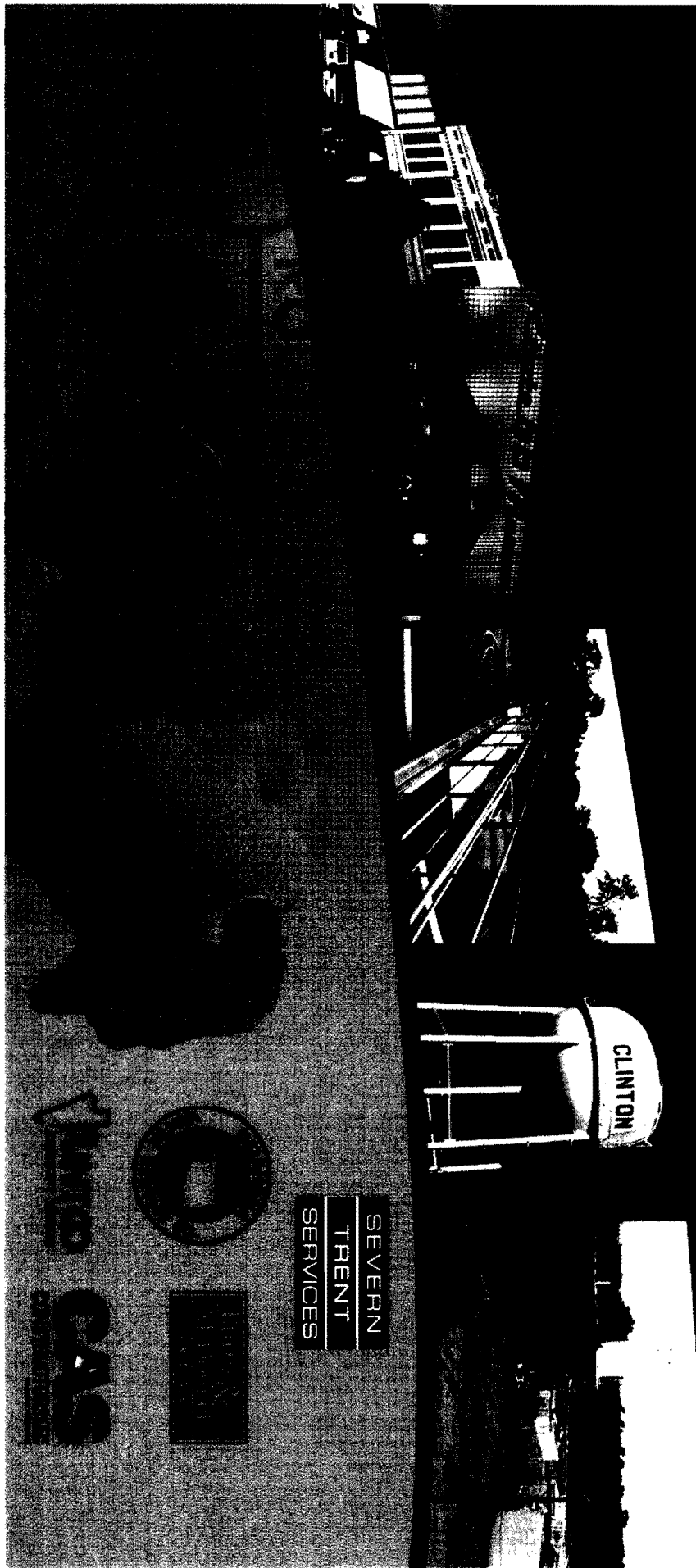


Design/Build/Finance/Own/Operate/Maintain
Water Solution

Winton
Hub City of Western Oklahoma



UNDERSTANDING
AVAILABLE RESOURCE

SEVERN
TRENT
SERVICES

Agenda

- Canute
- Golf Course Well
- Water Rights Applications
- Aquifer Investigation
- Proposed Treatment Facility
- Hydraulic Modeling
- Water Cost & Demand

Canute



- Testing complete – reviewing analytical results
- Coordinating with Canute & their engineer on implementation schedule
- Developed preliminary pipeline routing



Source: Aerial Imagery, Google Earth, Earthstar Geographics, CNES/Airbus DS, USDA, USDA, AeroGRID, IGN, Esri, DeLorme, and the Geo Community

Legend

Canute Well Field Raw Water Transmission Main

0 0.25 0.5 1 Mile

Clinton
The City of Western Oklahoma

Burns & McDonnell
SINCE 1898

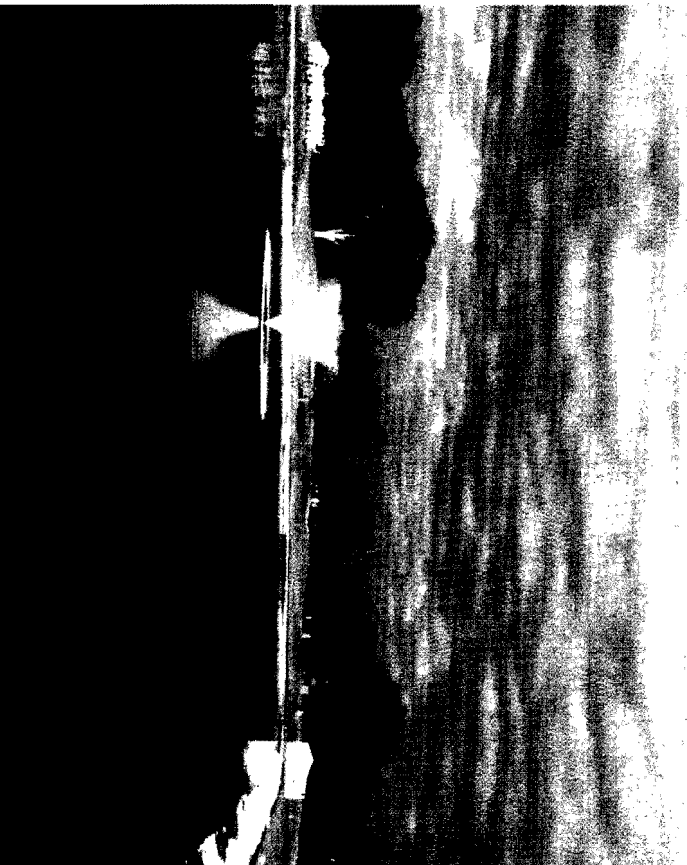
Canute Well Field Raw Water Transmission Main Conceptual Alignment

July 9, 2014

Clinton
The City of Western Oklahoma

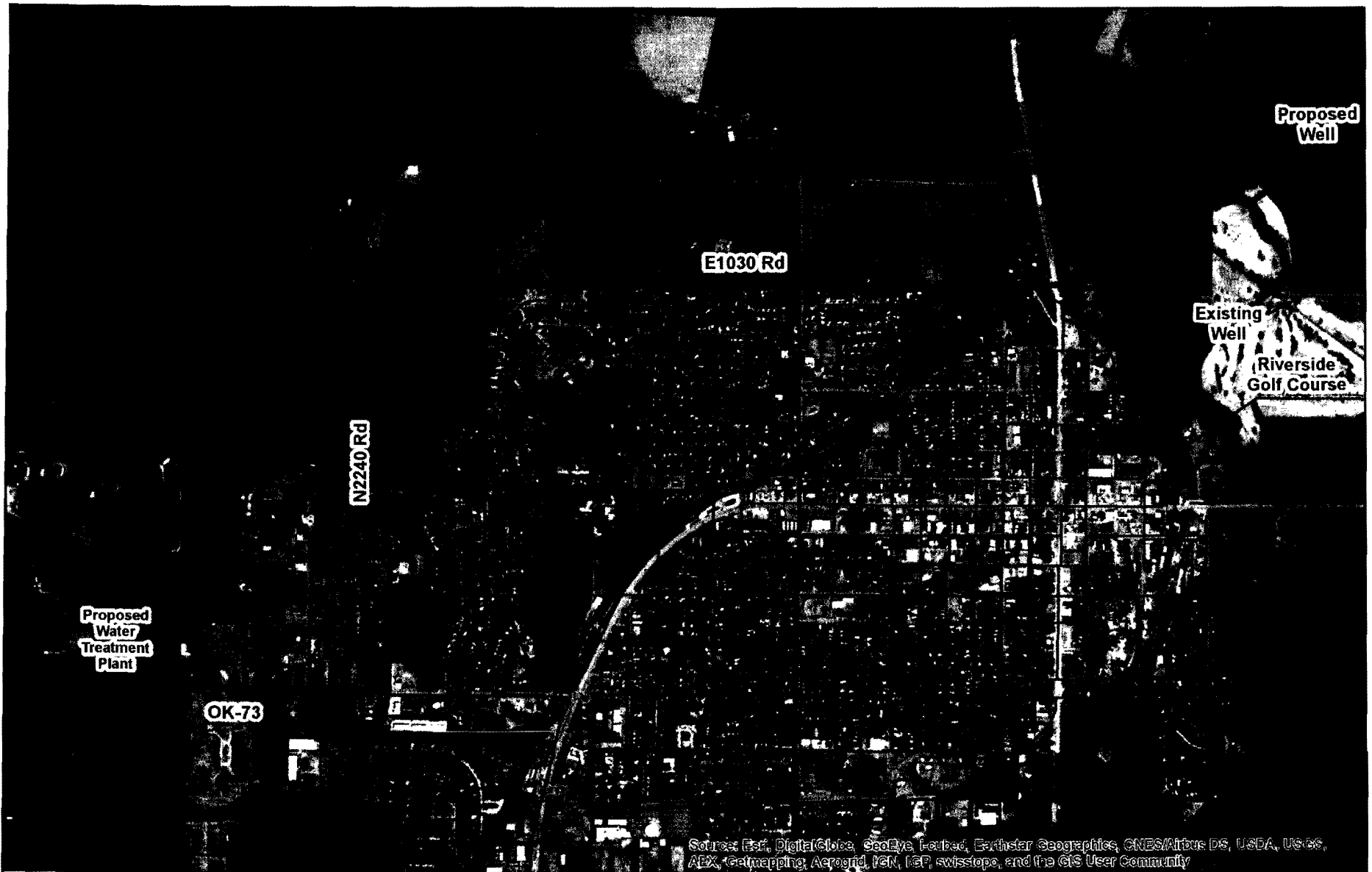
4

Golf Course Well





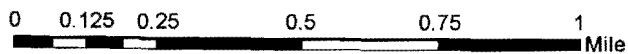
Clinton
INCORPORATED

- Pump testing complete
- Evaluating water level and quality data
- Evaluating pipeline routing



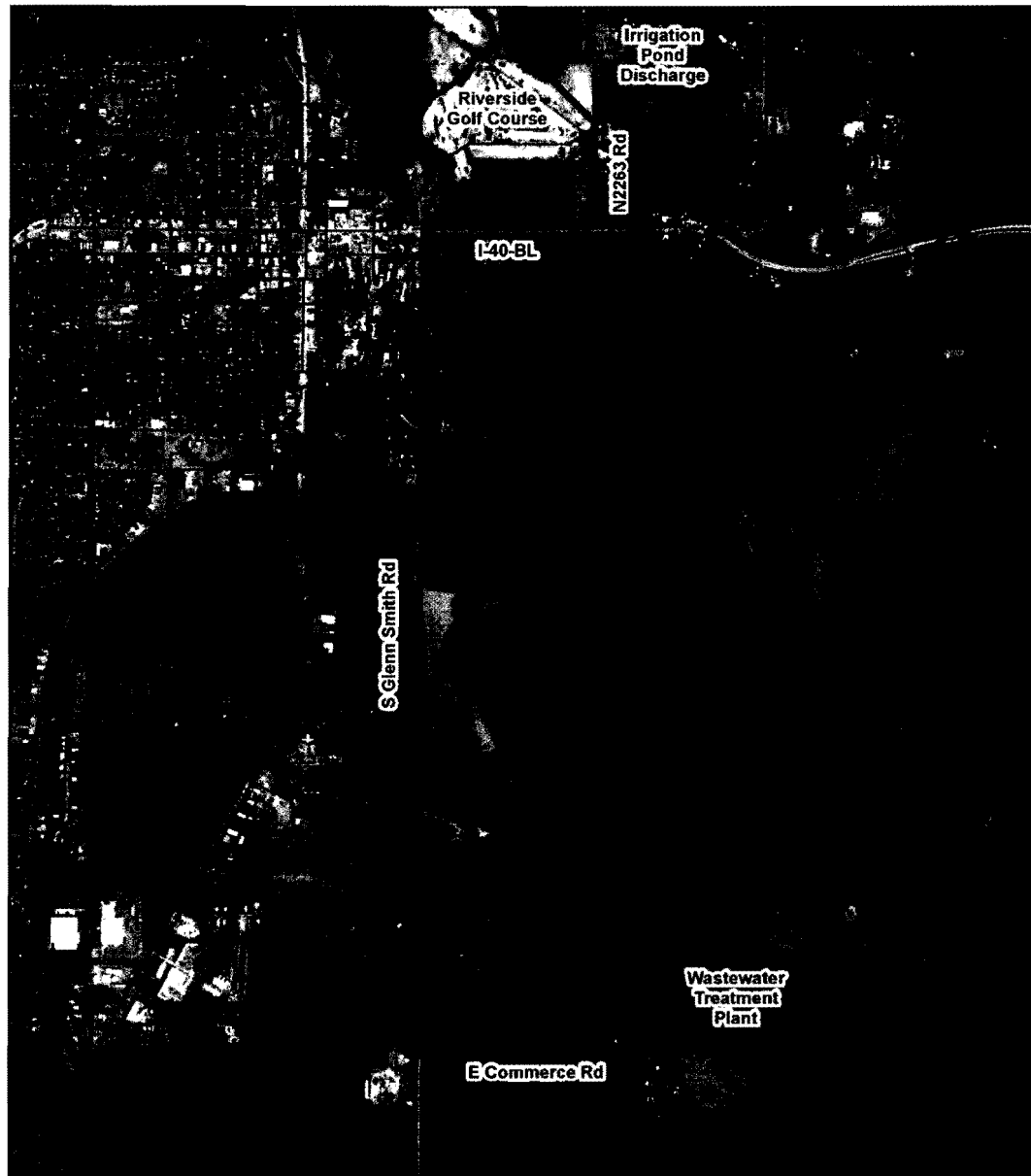
Legend

-  Golf Course Raw Water Transmission Main
-  Existing City Water Line


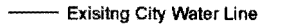


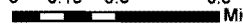
**Golf Course Raw Water
Transmission Main
Conceptual Alignment**

July 9, 2014



Legend

-  WWTP Effluent Reuse Main
-  Existing City Water Line

0 0.15 0.3 0.6
 Mile

Clinton
 The City of Western Oklahoma

Burns & McDonnell
 SINCE 1898

Wastewater Treatment Plant
 Effluent Reuse Main
 Conceptual Alignment

July 9, 2014

Clinton
 The City of Western Oklahoma

7

Water Rights Applications

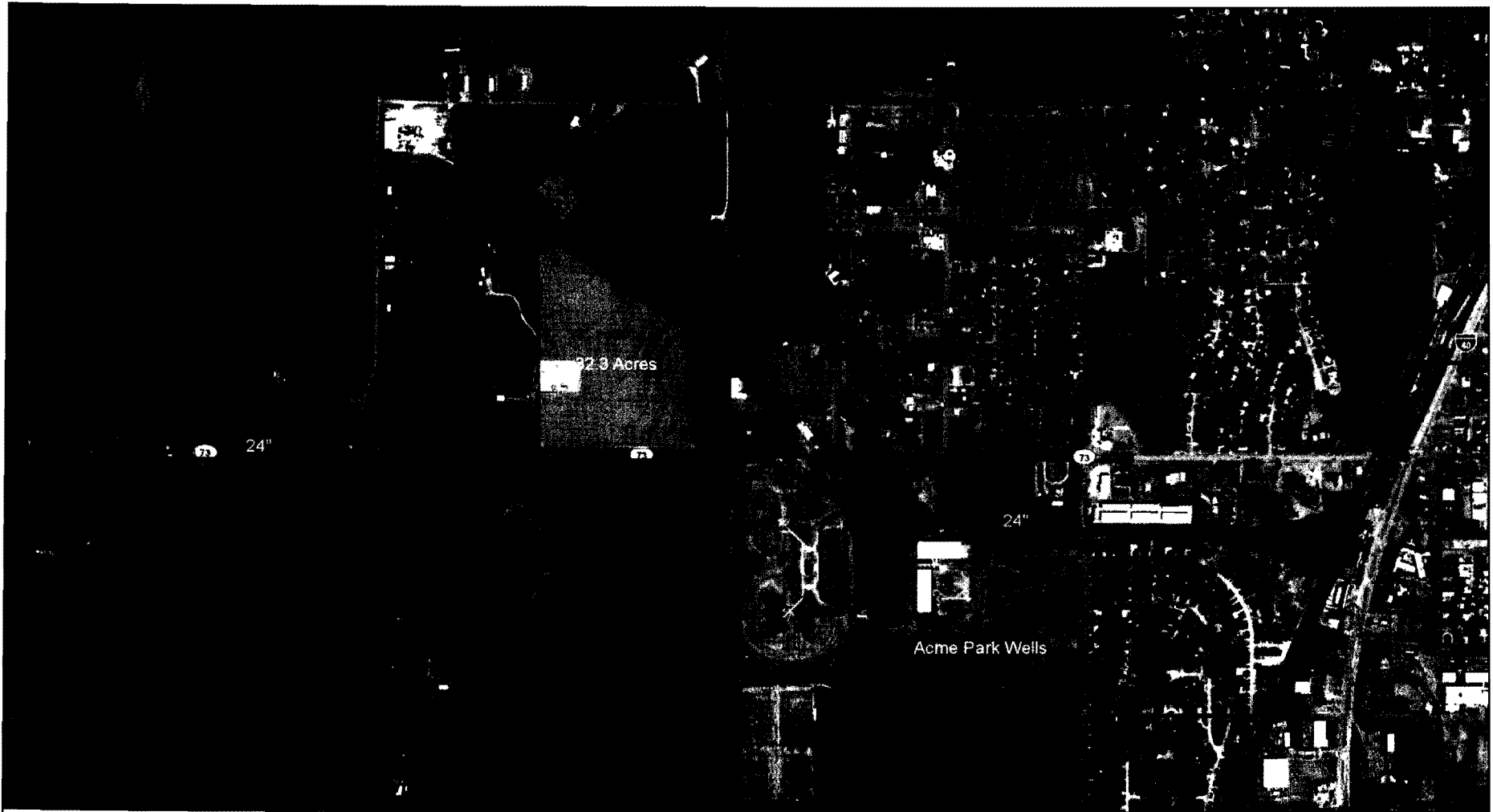
- Meeting held with OWRB on 7/9/14
- Calculated water right availability based on owned/platted land
- Amend the City's existing water rights associated with owned land
- New application for platted property

Aquifer Investigation



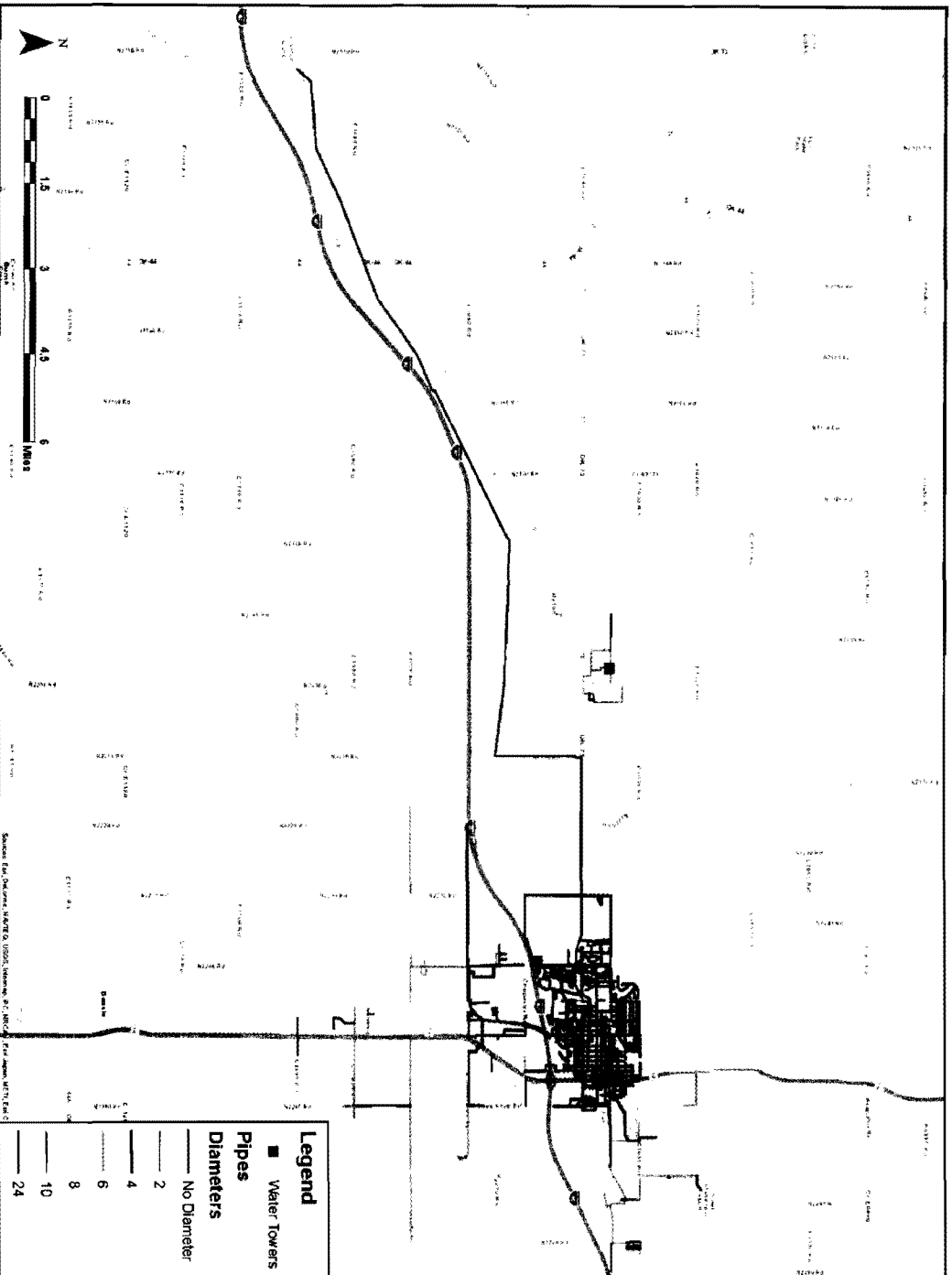
- Geophysical surveys complete at golf course & a private property
- Received 2-D seismic survey data for another private property
- Coordinating pump tests on two private properties

Proposed Treatment Facility



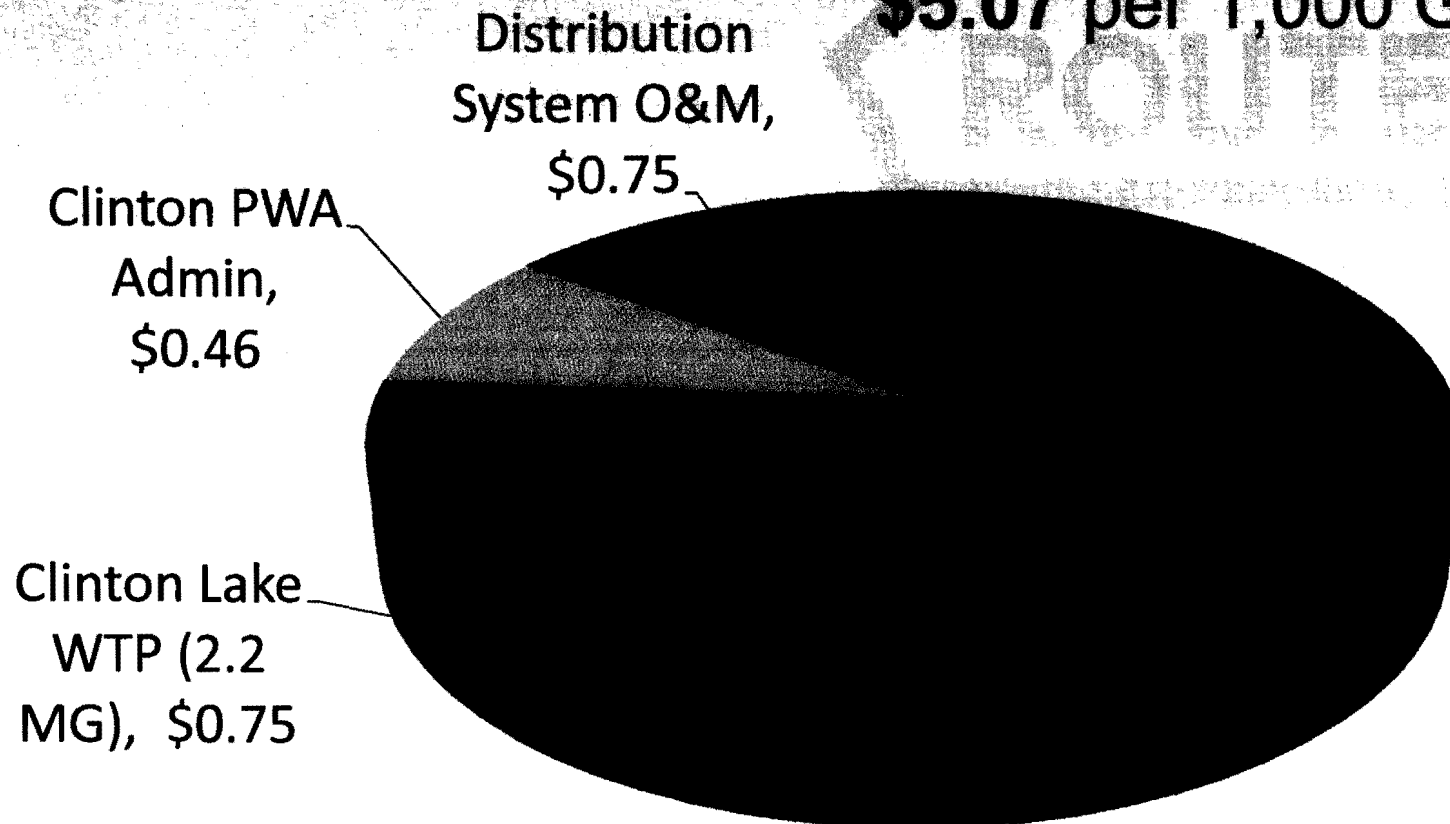
<p>Map Legend</p> <p>Proposed WTP Site ● City Owned Wells</p> <p>Washita River Centerline — Clinton Lake Pipeline</p>	<p>1:8,000</p> <p>0 250 500 1,000 Feet</p>			<p>Proposed WTP Site 3600 Modelle Ave Clinton OK</p>
--	--	--	--	--

Hydraulic Modeling



Water Cost

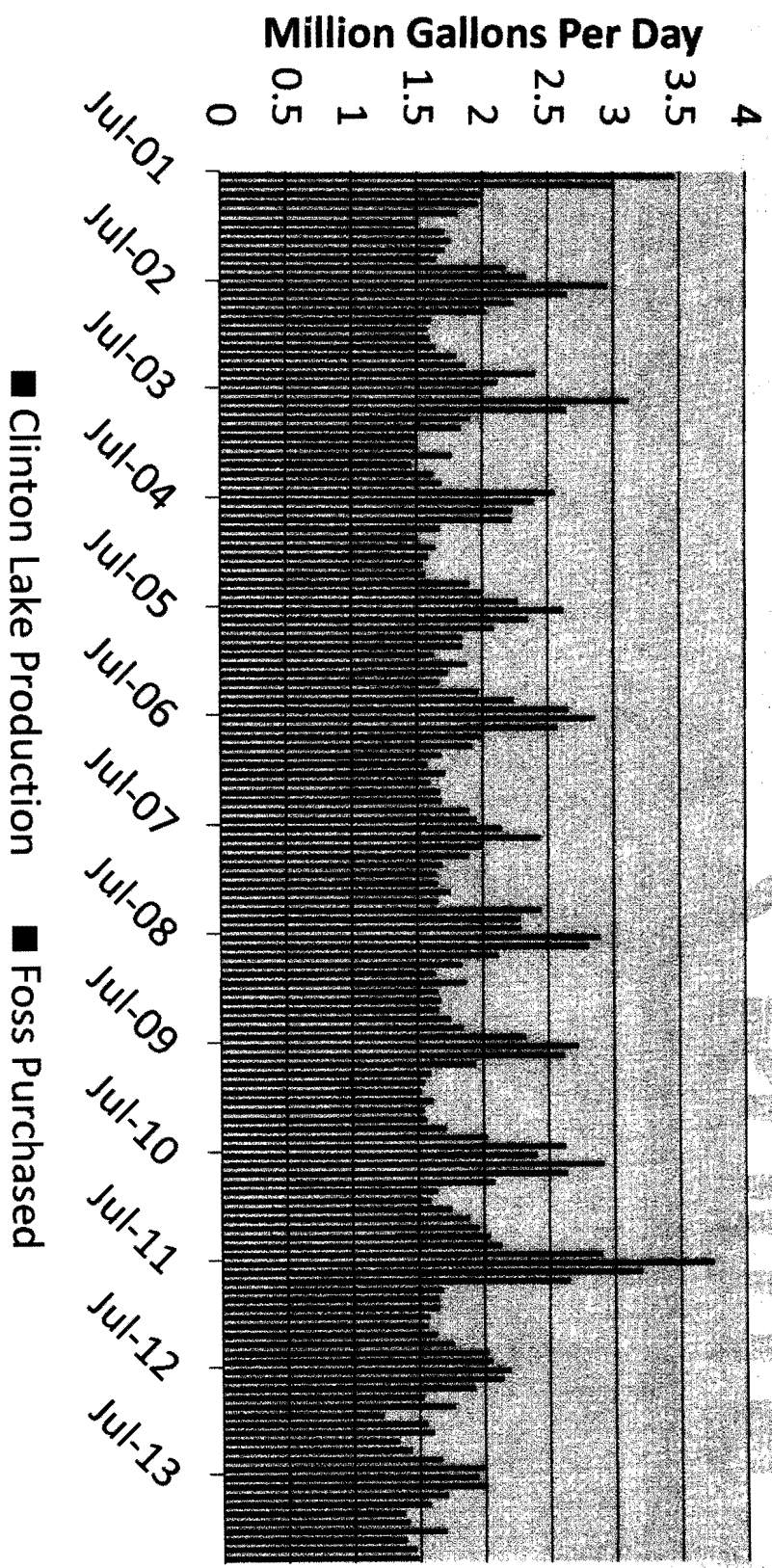
\$5.07 per 1,000 Gallons



*Cost per 1,000 Gallons Produced based on July 2013 – April 2014

Water Demand

City of Clinton – Water Produced & Purchased



Questions?

*C*inton

